

USACE STATE OF THE WATERWAY UPDATE – SAVANNAH DISTRICT



**US Army Corps
of Engineers®**



SAS POC AND CONTACT INFORMATION



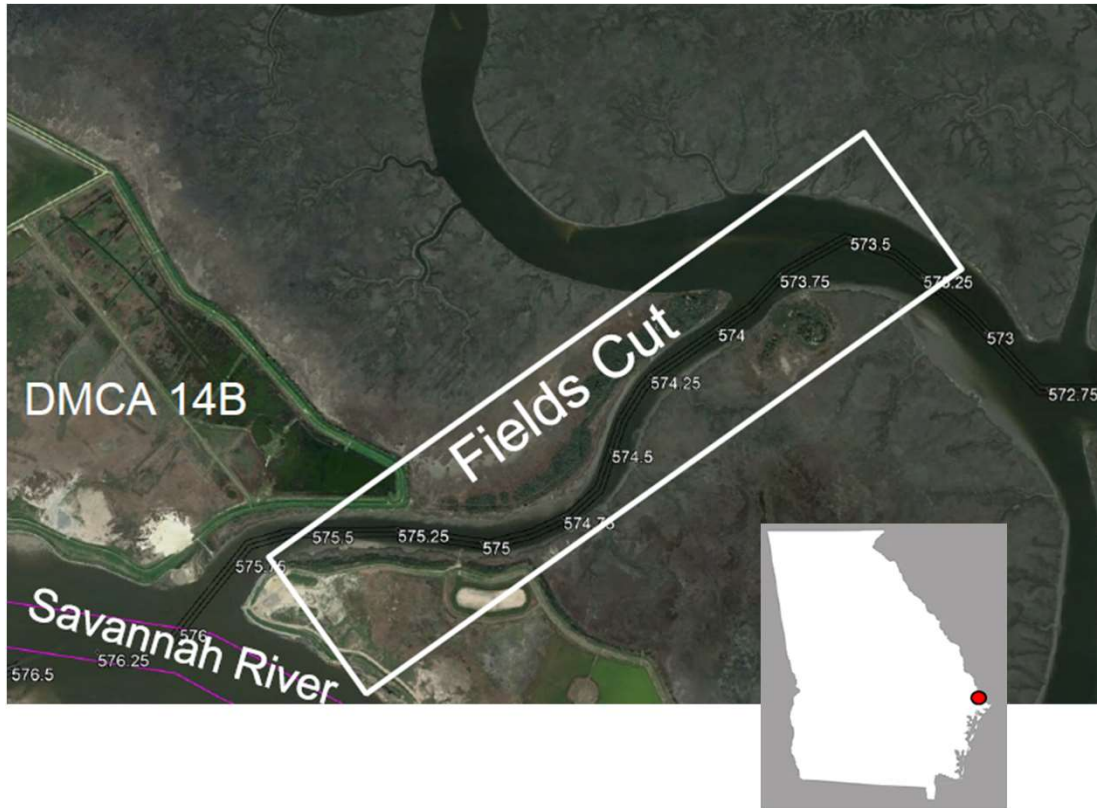
South Atlantic Division
Savannah District

Jonathan Broadie
Navigation Business Line Manager
jonathan.a.broadie@usace.army.mil

Erica Janocha
AIWW Project Manager
erica.a.janocha@usace.army.mil



FY22 AIWW O&M DREDGING



Location: Fields Cut (Jasper County, SC)

Dredge Type: Cutter-head

Placement: Confined Upland at 14B DMCA

Qty: 84,776 CY removed

Depth: -12 MLLW

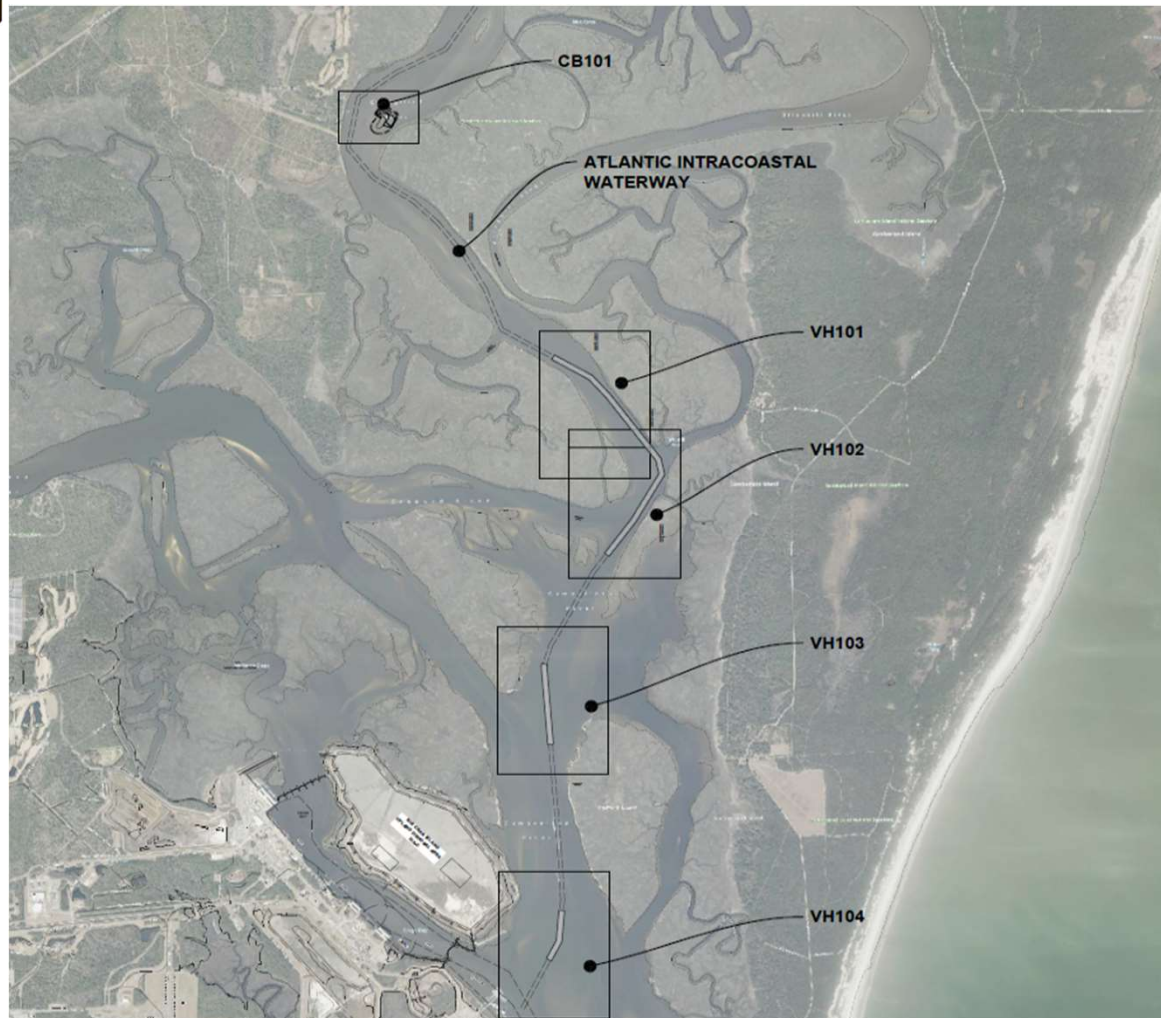
Acquisition: IFB 8(a) consolidated with Charleston District

Award: Sept 2022 to Southern Dredging

Dredging Complete: Sept 2023



FY23 AIWW O&M DREDGING WITH BENEFICIAL USE OF DREDGED MATERIAL



Location: Cumberland (Glynn County, GA)

Dredge Type: Cutter-head

Placement: Bird Island Creation in Cabin Bluff area

Qty: Est ~267,000 CY

Depth: -12 MLLW

Acquisition: IFB 8(a)

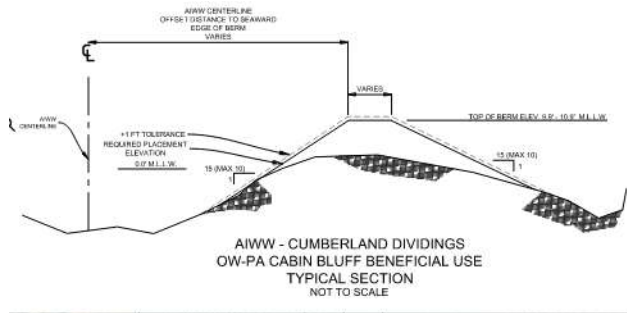
Award: Aug 2023 to Cottrell

NTP: 30 Nov 2023

Dredging Complete: June 2024



FY23 AIWW O&M DREDGING WITH BENEFICIAL USE OF DREDGED MATERIAL



CURVE TABLE					
CURVE #	LENGTH	RADIUS	DELTA	CH BEARING	
E10	31.34	50.00'	53°54'37"	30.80	N80°18'16.52"E
C11	228.47	185.44'	99°43'08"	214.96	N80°37'11.17"E
C12	417.97	190.44'	125°44'52"	338.89	S22°08'44.59"E

LINE TABLE		
LINE #	LENGTH	DIRECTION
L4	121.52'	N65°38'11.32"W
L5	187.40'	S16°43'42.00"W



Three phases of construction, elevation must be reached in each template before expanding island footprint.

~4.4 acres



FY24 AIWW O&M DREDGING



DAUFASKIE REACH



Potential Dredge Schedule: FY24 Contract Award for FY25 dredging of Rams Horn Creek with beach renourishment

Average Dredge Volume: 50kcy

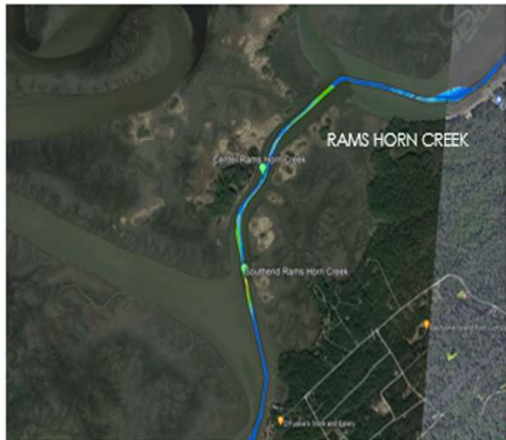
BU ideas: Beach Placement at Bloody Point (southeastern tip of Daufuskie Island)

Geotechnical Data:

90% Sand material

- Center Rams Horn Creek
- Southend Rams Horn Creek

Bathymetric Data:



OSSABAW REACH



Potential Dredge Schedule: FY24 Contract to dredge in FY25.

Average Dredge Volume: 92kcy

BU ideas: Potential placement is unconfined/ open water at Racoon Key. Challenges of sturgeon critical habitat.

Geotechnical Data:

- Northend Hell Gate DM 86
- Hell Gate DM 89
- Hell Gate DM 92
- Florida Passage DM 102

Bathymetric Data:



JEKYLL REACH



Potential Dredge Schedule: FY24 Contract with dredging in FY25

Average Dredge Volume: 373kcy

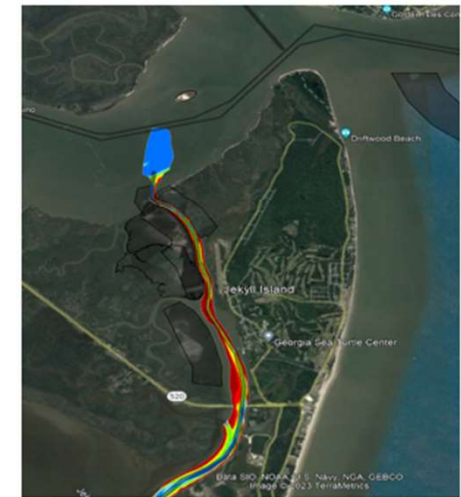
BU ideas: Potential placements are deep hole. Discussing with Jekyll Island Authority for more beneficial use applications in the area. TLP is not an option while still undergoing monitoring.

Geotechnical Data:

- Jekyll Creek Northend
- Jekyll Creek DM 13
- Jekyll Creek DM 19

Very silty material

Bathymetric Data:





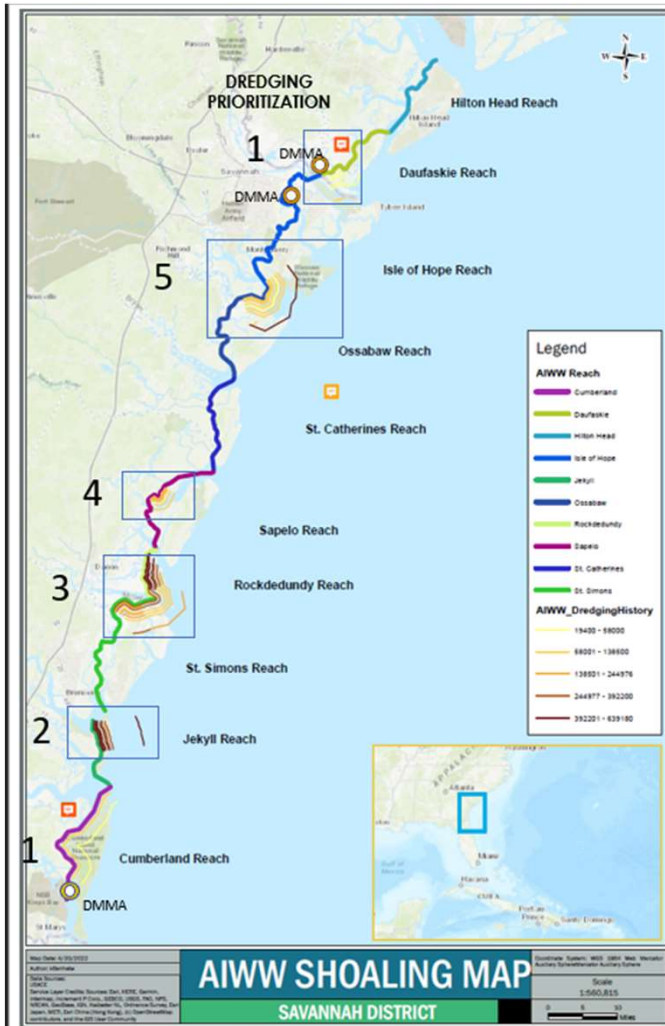
BUDM WORKSHOP WITH STAKEHOLDERS



- Regional effort lead by RSM RCX to develop a methodical approach to identifying BU sites.
- Dec 8th workshop in Savannah to bring together all interested stakeholders, to include State Resource Agencies, Manomet, CSO, and USACE to identify BU sites on the AIWW.
- By identifying and prioritizing new BU sites we can initiate coordination sooner with stakeholders and resource agencies to avoid delays, achieve multi-objective benefits, outline strategic implementation plans, and ultimately lead to increased BUDM.



AIWW SHOALING MAP & SEDIMENT DATA



GEOTECHNICAL DATA SUMMARY

Daufuskie	Center Rams Horn Creek
Isle of Hope	Southend Rams Horn Creek
Ossabaw	Walls Cut
Sapelo	Northend Fields Cut
Rockdedundy	Southend Fields Cut
St. Simons	Northend Elba Cut
Jekyll	Southend Elba Cut
Cumberland	Vicinity DM 29
	Northend Hell Gate DM 86
	Hell Gate DM 89
	Hell Gate DM 92
	Florida Passage DM 102
	Creighton Narrows DM 155
	Creighton Narrows DM 155i
	Creighton Narrows DM 156
	Deboy Sound DM 178
	Rockdedundy @ DM 184
	Rockdedundy DM 188
	Little Mud DM 190
	Little Mud DM 192
	Little Mud DM 194
	Altamaha Sound DM 204-206
	Altamaha Sound DM 208
	Altamaha Sound @ DM 211
	Buttermilk Sound DM 218
	Buttermilk Sound DM 220
	Buttermilk Sound DM 222
	McKay River DM 234A
	Jekyll Creek Northend
	Jekyll Creek DM 13
	Jekyll Creek DM 19
	Cumberland Dividings DM 60
	Cumberland Sound RG
	Cumberland Sound DM 75

- >90% Sand
- 80-89% Sand
- 50-79% Sand
- <50% Sand